



aluminium
**BIFOLDING
DOORS**



EYGG commercial & trade
glazing solutions

BF73 BIFOLDING DOORS

Aluminium bifolding doors create a visually stunning addition to your home and can add significant value to the property.

Class-leading design features set the BF73 Bifolding Door aside from any competition. Excellent thermal performance and slim profile sections to minimise visible framework and maximise the glass area, is key to their design.

Engineering grade hardware, allows for silky smooth opening and closing operation, without the premium price.

What's more, our doors come with a 10-year manufacturers' guarantee for your complete peace of mind.

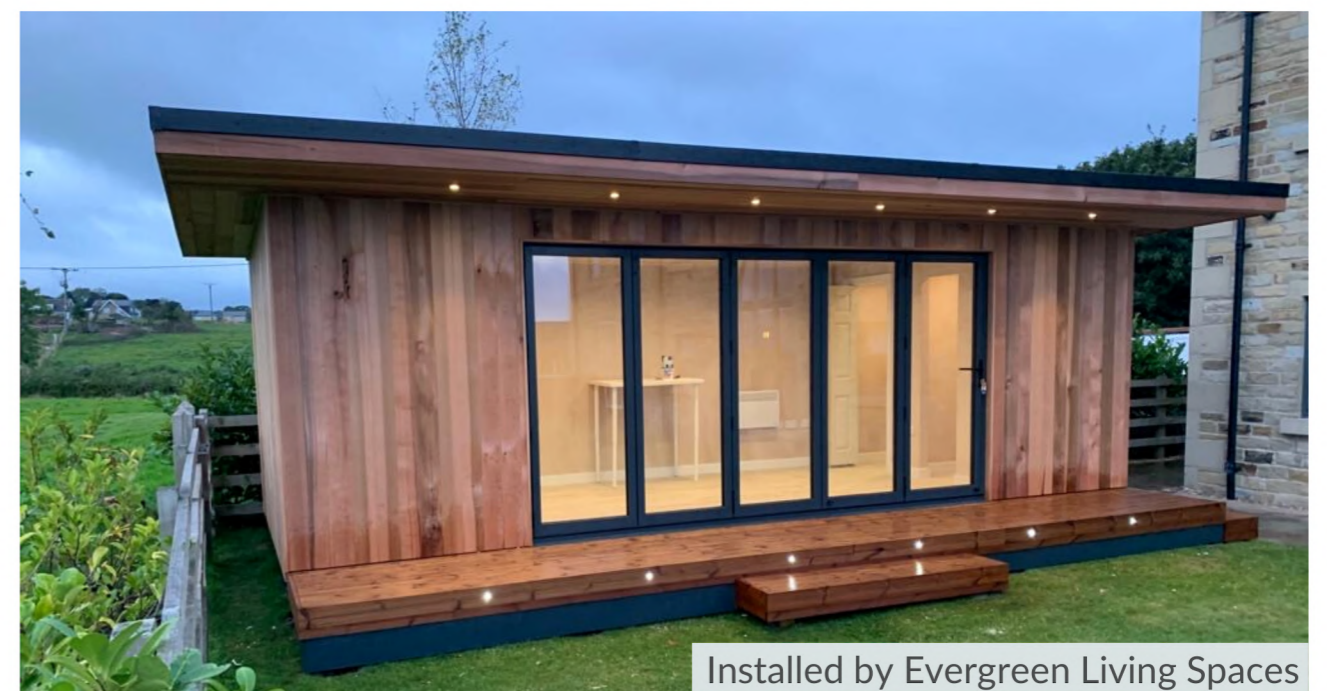
Why choose Aluminium?

Aluminium is extremely durable and more hard-wearing than other materials on the market. You'll be able to enjoy your aluminium doors for not only years but decades to come as they're incredibly resistant to the elements.

It is also an incredibly strong material, therefore providing a high level of security and impact resistance.

Aluminium doors are among the best-insulated on the market, thanks to advanced thermal break technology, which prevents cold transfer.

They require very little maintenance to ensure optimal performance and keep them looking good as new.



Installed by Evergreen Living Spaces

Whether it's a single door, French door or bifolding door or window, they can all be fabricated from the same BF73 system. It's so **versatile** that it caters for projects that call for shaped frames, fixed frames, sidelights, astragal bars, blinds in glass and can even be used as an entrance door with optional panel inserts.

Our BF73 products can be finished in several glazing options to create a style to suit any property. Single doors, French doors, bifolding doors or windows, or shaped and fixed frames glazing options:

- Double glazed
- Triple glazed
- Integral blinds
- Heritage look astragal bars
- Solid panel inserts



10
YEAR
GUARANTEE

PAS24
COMPLIANT

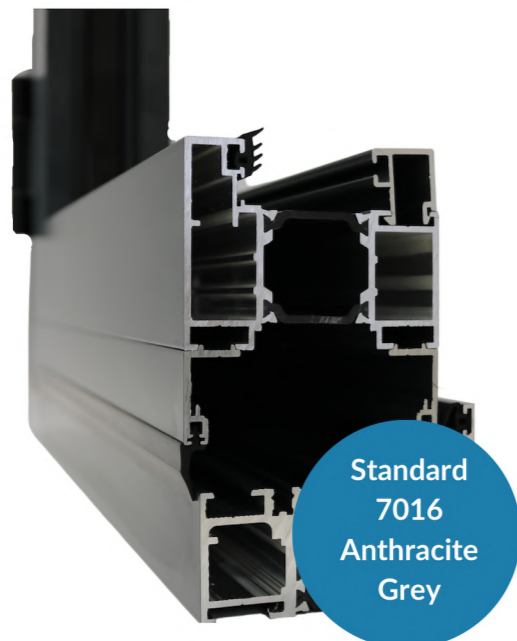
ULTRA
SLIM
SIGHTLINES

Installed by KJ Bloomer

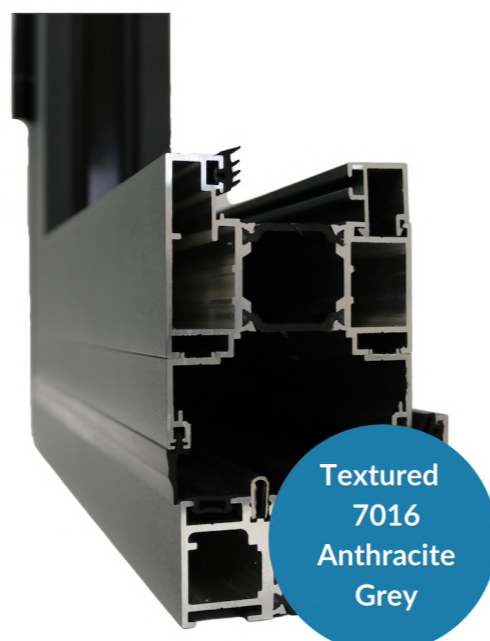
All BF73 sashes are available in 3 profile designs: **square**, **textured square*** and **curved**.

Choose square for a classic look or textured square for a more contemporary alternative. And, if you're looking to complement your property's existing windows, then opt for our newest addition, the curved sash.

**textured square only available in 7016 anthracite grey*



Standard
7016
Anthracite
Grey



Textured
7016
Anthracite
Grey



Bifold
Window



Installed by CGS Glazing



French
Doors with
Astragal Bars

ALUNET
SYSTEMS

ALULOCK

LOCK, KEEP
AND HANDLE

AluLock is the **ultimate security kit** that combines a euro profile cylinder as standard, with the option to upgrade to the Ultion 3-star barrel, with the Brisant Sweet Handle and an **exclusively** designed Duplex Double Hook Lock.

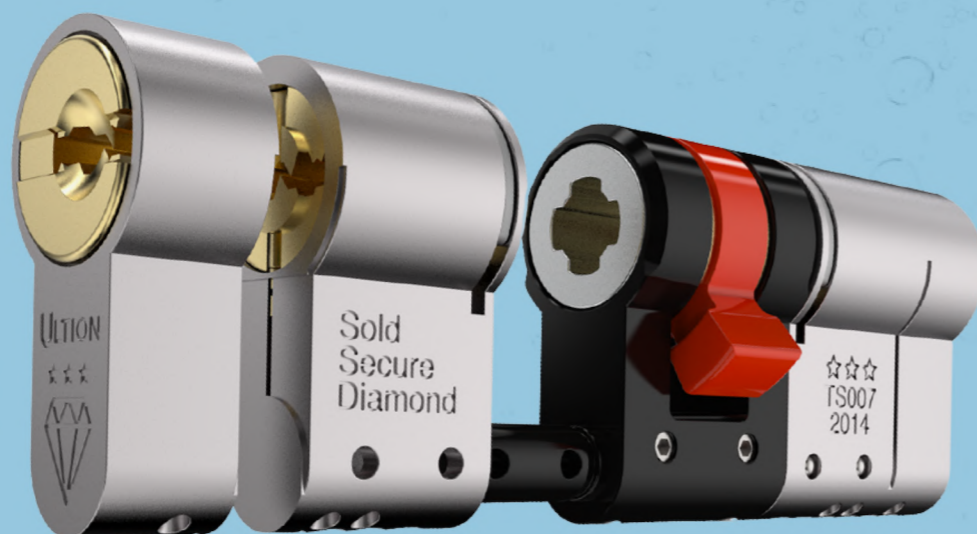
Ultion Stays Locked

The **Ultion 3-star barrel** provides double the sacrificial protection, made from materials 25% denser than iron and with twice the number of pins than the average lock (including an antipick pin) and 20-point drill protection as standard. If attacked, the barrel enters 'lockdown mode', meaning the lock is practically impenetrable without heavy and noisy power tools.

Brisant are so confident of this that they will pay **£2000** direct to the homeowner should a burglary take place within 10 years from the point of installation and entry was achieved by snapping an Ultion lock.



BRING THE ULTION
TECHNOLOGY
TO LIFE >



Duplex Double Hook Lock

The **Duplex Double Hook Lock** has been designed by UK-based Ingenious' highly experienced and dynamic design team, providing a 6-point locking system instead of 3-hook, for additional **security**. It comes with a dual follower to allow twin spindle function, which prevents unauthorised entry when the lock is in a latched position.

The Sweet Handle

The safe and stylish **Sweet Handle** is impressively **durable**, carrying multiple coatings of brass and nickel to ensure robust performance against the elements. Brisant also offers a 10-year direct to homeowner **anti-corrosion** guarantee for peace of mind.

The sleek curved design is not only pleasing to the eye but is an impressive **security** feature, stopping gripping tools designed to snap off handles during break ins. Available in a range of colours including; black, white, grey, chrome and stainless steel. Gold and rose gold also available.



BRISANTSECURE ULTION





10
YEAR
GUARANTEE

PAS24
COMPLIANT

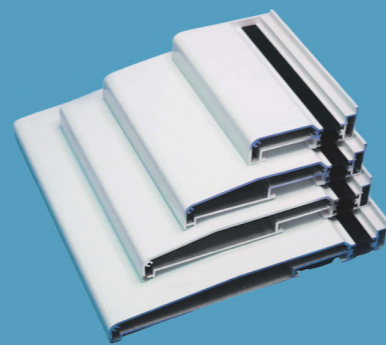
ULTRA
SLIM
SIGHTLINES

Universal Aluminium Cills

Our range of universal **aluminium cills** with **pre-drilled screw ports** are compatible with most other door and window systems, as well as with our BF73 bifold system.

More robust than PVC alternatives, it comes complete with plastic push-in colour matched end caps, in our standard stock colours, for a secure and sleek finish, choosing from cill sizes of **90mm, 150mm, 190mm and 230mm**.

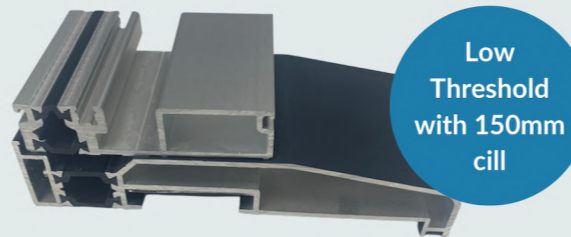
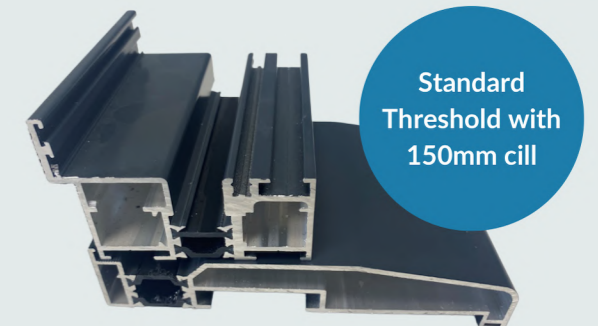
Available in Black, White, Anthracite Grey, textured Mill finish, and dual colours of White/Anthracite Grey and Black/White and can also be powder-coated in any RAL colour.



Cills and Thresholds

Standard Threshold

Our **Standard Threshold (55mm)** or weathered threshold provides the utmost protection whilst still looking sleek. The standard threshold acts as a full weather break, keeping your home dry and warm regardless of outside elements. Hence, for external bifolding doors, the standard 55mm is recommended.

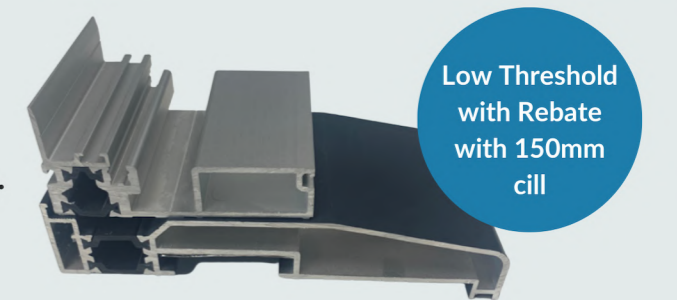


Low Threshold

Our Low Threshold (20mm) doesn't offer as much weather protection but creates a seamless look.

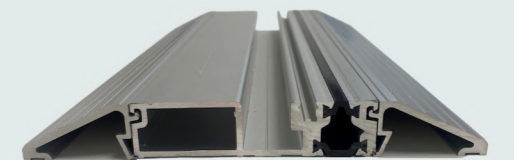
Low Threshold with Rebate

A 20mm rebate can be attached to our low threshold, making it only slightly higher at 40mm. The lip of the rebate gives extra weather protection against the elements.



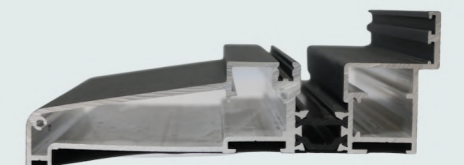
Low Threshold with Ramps

When a threshold can't be sunk below floor level and accessibility is required, a ramp can be added either side of the low threshold. This is an optional extra on low thresholds.



Integrated Cill

Integrated Cills provide full weather rating on our lowest threshold and maximises the overall sash height of the door leaf. For ease of fabrication, the profile already has pre-drilled drainage slots along the inside face.



Hardware & Security



The BF73 Bifold Door system comes with a range of sleek, complementary hardware as well as the Sweet Handle, including the Stainless Steel handle range from Coastal.

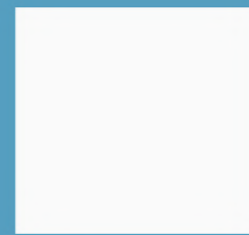
Combined with a high-security multipoint locking system, keeping your property safe and secure.

Check with your manufacturer to see which hardware options they offer.

Colours

Our doors are available in three standard colours, plus two dual colour options.

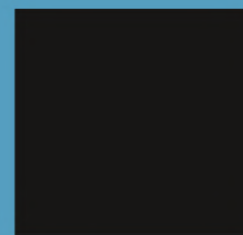
For projects requiring bespoke coloured doors, any RAL colour can be available upon request.



White
RAL9016



Anthracite
Grey RAL7016



Black
RAL9005



Grey Out/
White In



Black Out/
White In



Bespoke RAL
colour





B
ENERGY
RATING

1.4
U-VALUE

107MM
ULTRA
SLIM
SIGHTLINES

NEW & IMPROVED

Product development is always key for our products at Alunet Systems.

Our dedicated team of expertise have designed a NEW variant of the bifold, offering multiple upgraded features for homeowners to make the most out of their home improvements including:

- **NEW Super-slim sightlines** of just 107mm, providing even better views with fewer interruptions.
- **IMPROVED Window Energy Rating (WER)** now rated B, increasing energy efficiency throughout the home. Keeping you cooler in summer & warmer in winter.
- **ULTRA-LOW U-values** now as low as 1.4 W/m²K, as the bifold now has even better performance.
- **NEW PAS24: 2022** certification.

Thermal Efficiency

The BF73 system can achieve a U-values as low as **1.4 W/m²K**, when combined with highly energy efficient glass.

Weather Resistance

Excellent weather sealing is achieved using specially designed **perimeter seals**, with the option of **weather piles** for lower thresholds. Weather-tightness tested to British standards.

Low Maintenance

Our **low-maintenance** aluminium doors are strong, durable and highly **corrosion-resistant**. Unlike timber, they don't need painting or staining to keep them **weather-proof**, and they won't rust or corrode. They will also never rot, peel or flake.

Maximum Vision

The Alunet BF73 Door System gives one of the largest sash sizes available, with up to 1200mm width and 3000mm height per pane. Paired with super slim sightlines of just 107mm or 120mm, you'll get the best uninterrupted views.

Floating Corner Post

The **floating corner post** option enables right-angled BF73 bifolding doors, including the return, to open out fully, with the option of a fixed corner, for the ultimate wow factor! (Structural support needs to be in place.)



DISCOVER MORE >
Point your smart phone camera at this QR code and bring all the BF73 products to life!



Installed by RJ Day Plastering

CREATE YOUR PERFECT BIFOLD



Installed by Luna Door & Window Design

Door leaf configuration

BF73 doors are available in up to 7 leaves each way (14 total). The leaves are able to open either from the left or right of the opening, either opening towards the inside of the property or to the outside – the choice is yours.

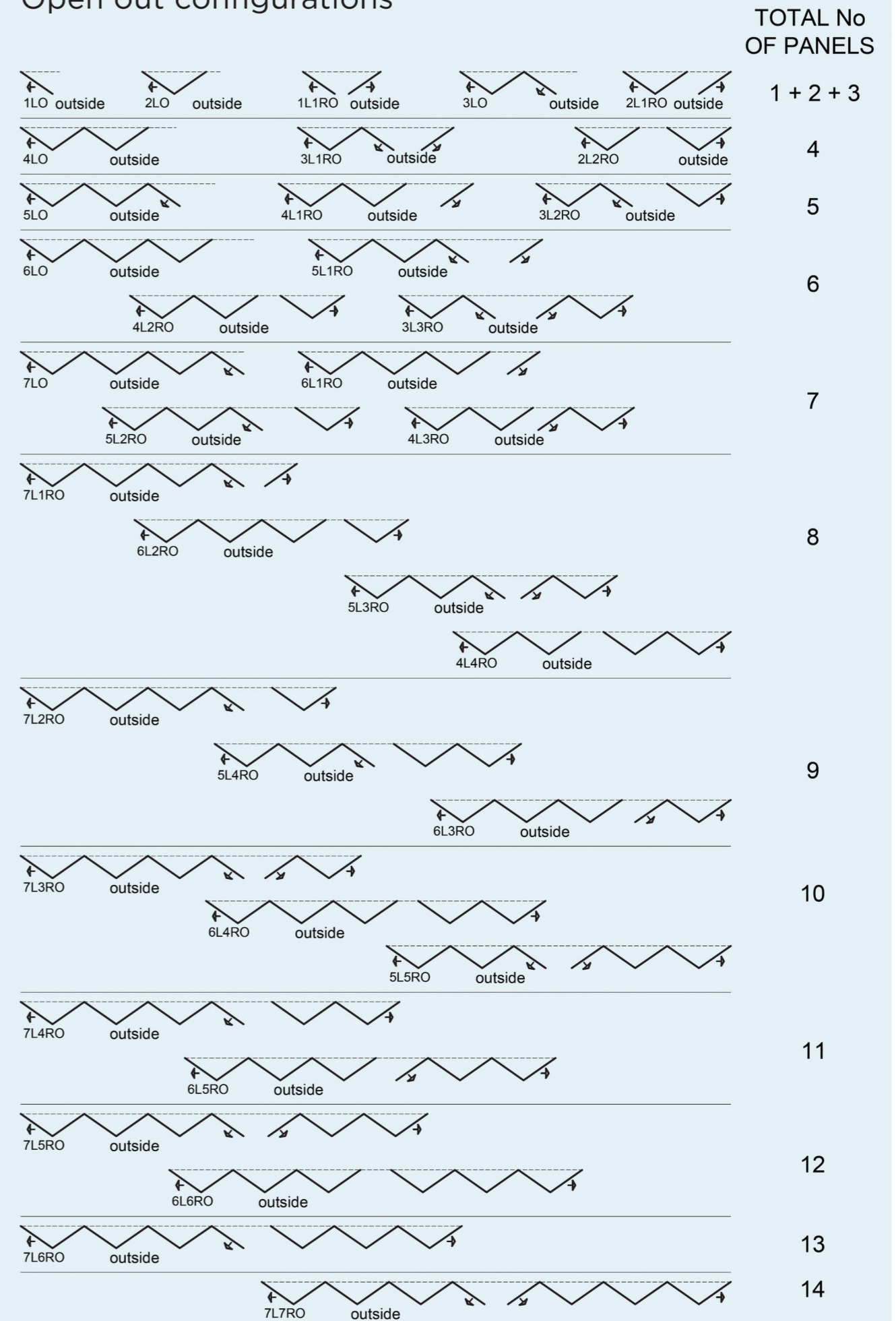
Adjustable Jamb (Optional)

The BF73 system has been designed to be quick and easy to manufacture and install. The system offers an optional adjustable jamb feature for maximum adjustability of +/- 4mm either side during installation and easily adjustable at a later date with an allen key.

Technical details at a glance:

- Market-leading maximum sash size of 1200mm x 3000mm.
- Maximum vision – minimal sight lines of only 107mm or 120mm.
- Maximum security – PAS 24 compliant.
- Maximum insulation value – down to 1.4 U W/m2K.
- Maximum weather proofing – tested to BS6375 Part 1 : 2009.
- Single or dual colour. Factory powder coated to marine quality as per Qualicoat regulations.
- 120kg per door leaf providing for the openings.
- Engineering grade running rollers for a smooth and silky opening and closing operation.
- Trickle vents can be added.

Open out configurations



aluminium
**BIFOLDING
DOORS**



EYGG commercial & trade
glazing solutions

Tel 0800 181 888
Email info@eyggroup.co.uk
www.eygcommercial.co.uk

